



Kirkby Apartments, Baythorne Street  
London, E3 4GL

£1,900 PCM

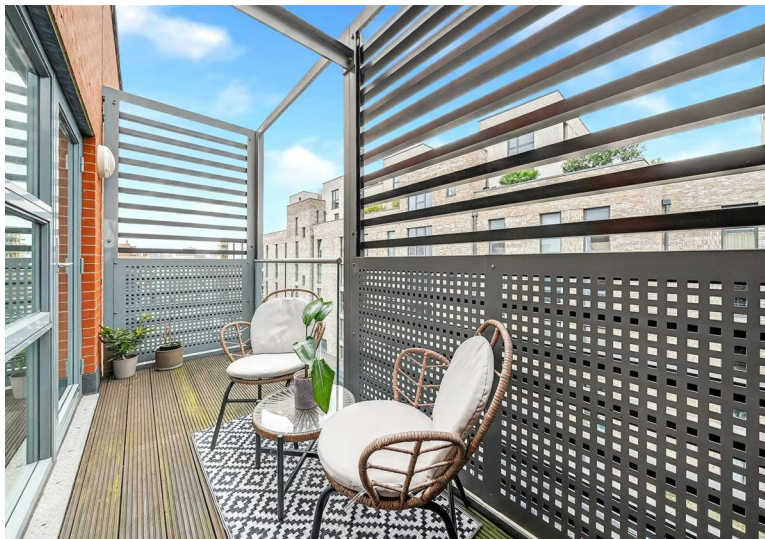


Elms Estate are delighted to offer to the market To Let this Amazing ONE Double Bedroom Apartment situated on the Fifth floor with it's own Balcony.

Kirkby Apartments is located just off St Paul's Way which is just a short walk to Mile End and Devons Road stations which makes commuting to the city very easy and accessible. The property is within close vicinity of an abundance of local shops and amenities, with Mile End Park just a few streets away.

The property benefits from a light and airy open plan Reception/Kitchen area which leads out on to the balcony, a modern fitted kitchen. One double bedroom and good sized bathroom. The property is modern through out and is available to move in to immediately.

For more information or to arrange a viewing please do not hesitate to call in and speak with one of our property consultants.



## Reception

15'1" x 10'6" (4.60m x 3.20m)



## Kitchen

11'6" x 7'7" (3.51m x 2.31m)



## Bedroom

15'1" x 8'10" (4.6 x 2.7)



## Balcony

13'9" x 4'11" (4.2 x 1.5)



## Bathroom

6'11" x 6'7" (2.11m x 2.01m)



## Material Information

Deposit: £2,192.30

Council Tax Band: C

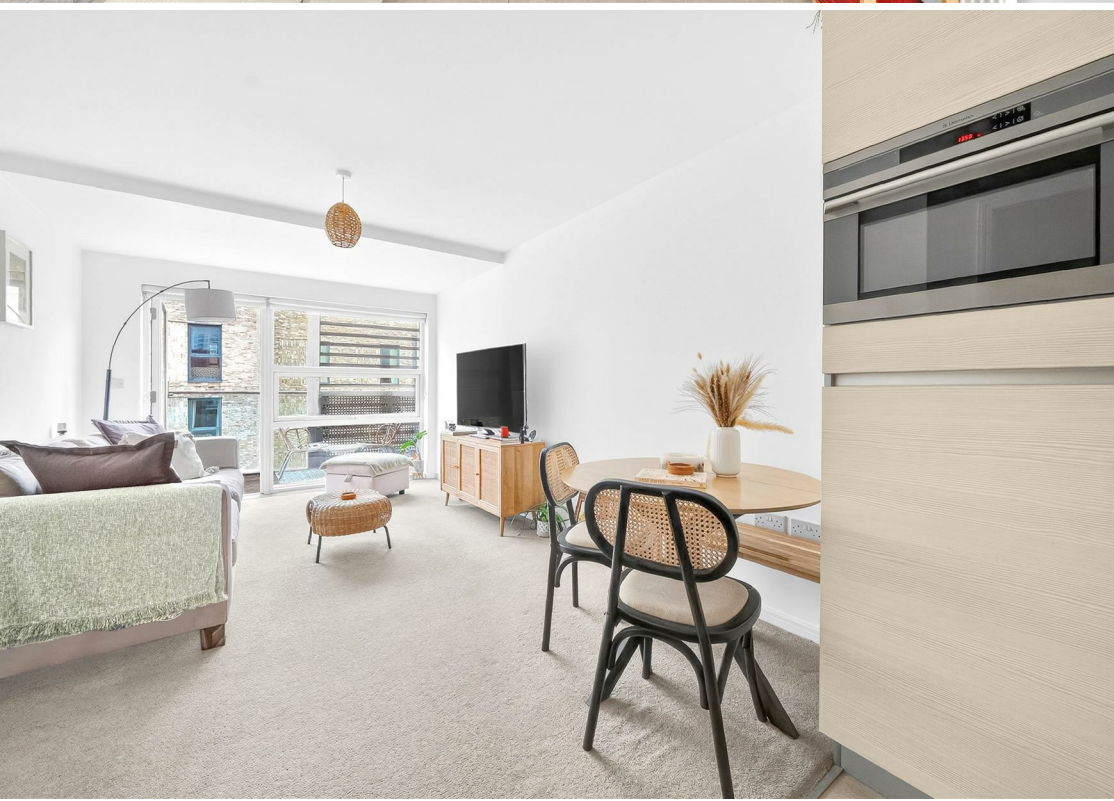
## Marketing Disclaimer

These particulars are intended to give a fair description of the property, but their accuracy cannot be guaranteed and they do not constitute an offer or contract. Any intending tenant must rely on their own inspection and enquiries. All measurements, areas and distances are approximate and are for guidance purposes only. Photographs and floor plans are for illustrative purposes only and some images may have been digitally enhanced for marketing purposes.

Where the property is managed by Elms Estates (if applicable), appliances, fixtures and fittings provided are checked and are intended to be in reasonable working order at the commencement of the tenancy. However,

no guarantee is given as to their continued or uninterrupted operation and faults may occur during the tenancy. Any issues should be reported in accordance with the tenancy agreement to allow for inspection and repair.

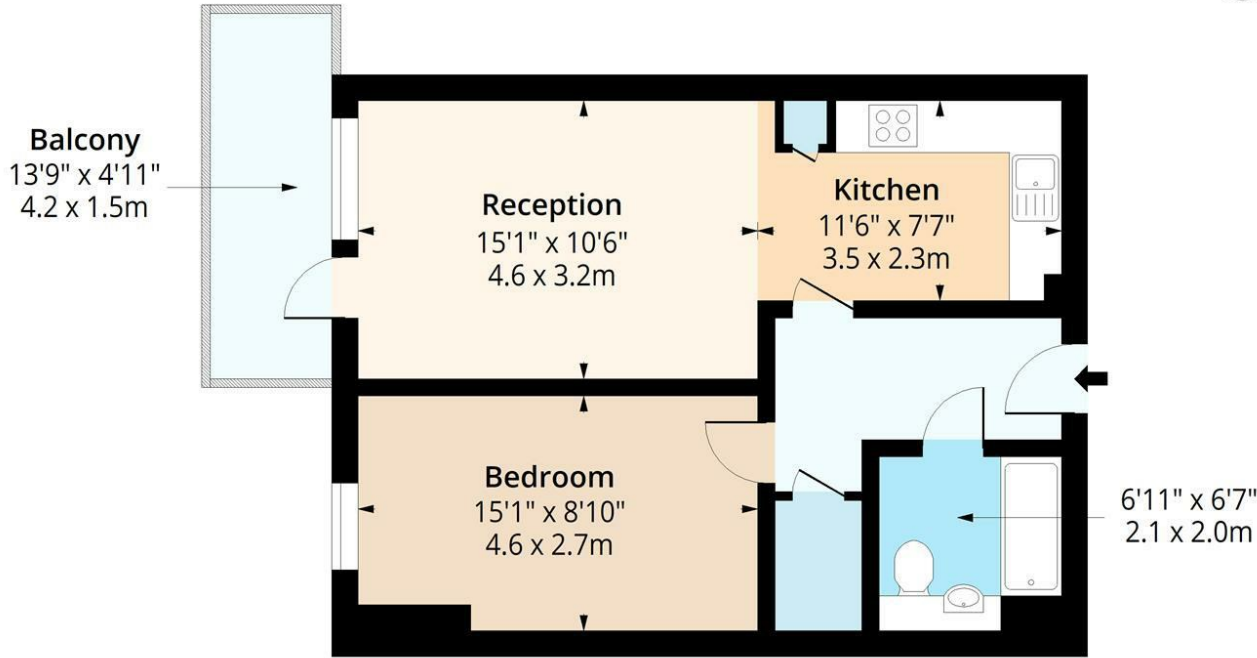
Council Tax bands, EPC ratings and permitted payments under the Tenant Fees Act 2019 are provided in good faith and are subject to verification. No person in the employment of Elms Estates has authority to make or give any representation or warranty in relation to this property.





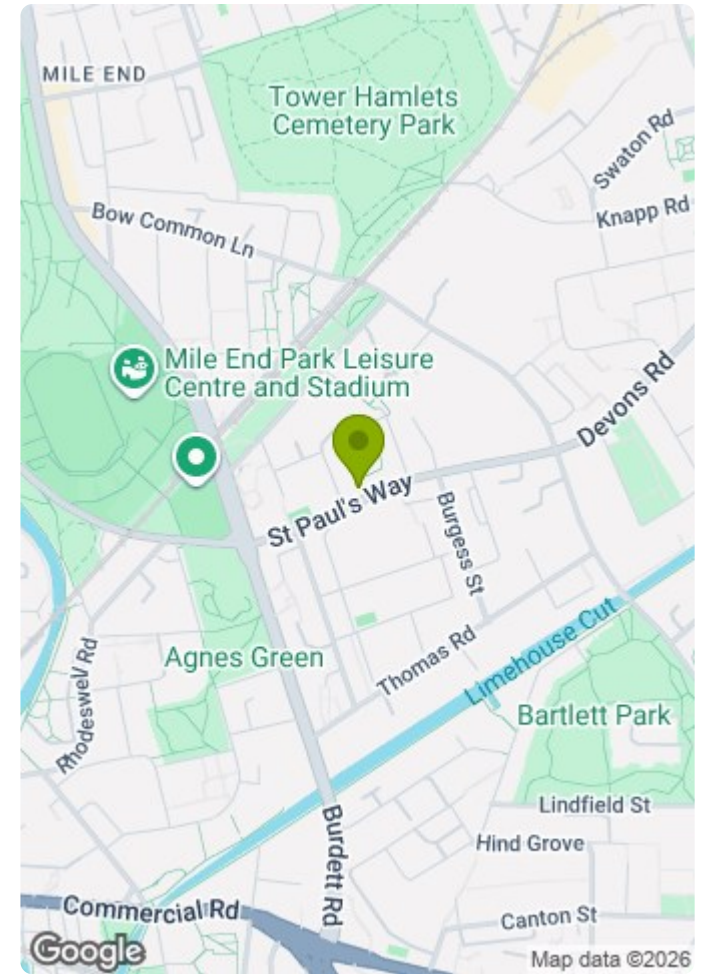
# Kirkby Apartments E3

Approx. Gross Internal Area 532 Sq Ft - 49.42 Sq M  
 Approx. Gross Balcony Area 63 Sq Ft - 5.85 Sq M



## Fifth Floor

Floor Area 532 Sq Ft - 49.42 Sq M



Measured according to RICS IPMS2. Floor plan is for illustrative purposes only and is not to scale. Every attempt has been made to ensure the accuracy of the floor plan shown, however all measurements, fixtures, fittings and data shown are an approximate interpretation for illustrative purposes only. 1 sq m = 10.76 sq feet.

lpaplus.com

Date: 1/4/2026

